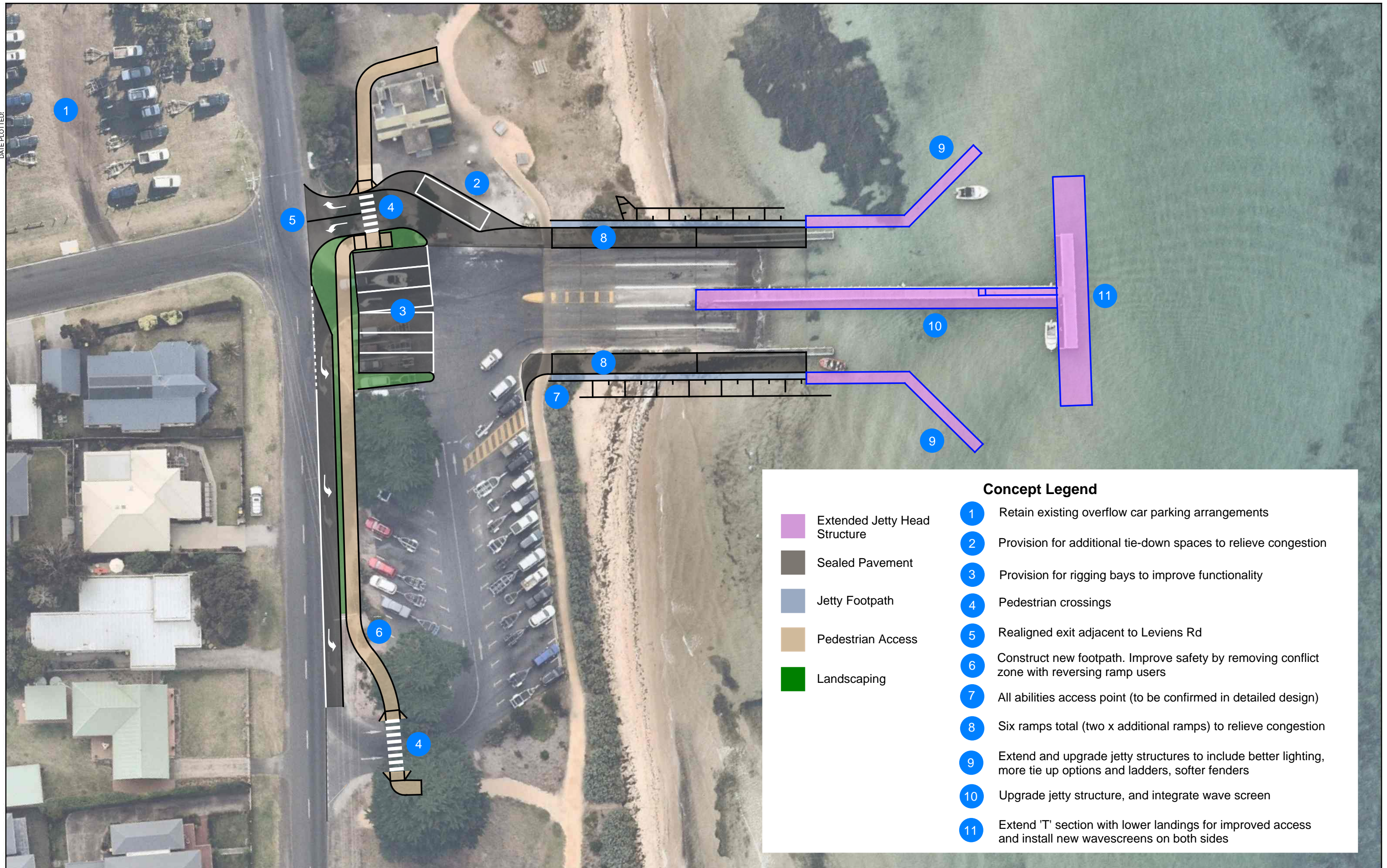


DATE PLOTTED:



Concept Legend

- Extended Jetty Head Structure
- Sealed Pavement
- Jetty Footpath
- Pedestrian Access
- Landscaping

- 1 Retain existing overflow car parking arrangements
- 2 Provision for additional tie-down spaces to relieve congestion
- 3 Provision for rigging bays to improve functionality
- 4 Pedestrian crossings
- 5 Realigned exit adjacent to Levens Rd
- 6 Construct new footpath. Improve safety by removing conflict zone with reversing ramp users
- 7 All abilities access point (to be confirmed in detailed design)
- 8 Six ramps total (two x additional ramps) to relieve congestion
- 9 Extend and upgrade jetty structures to include better lighting, more tie up options and ladders, softer fenders
- 10 Upgrade jetty structure, and integrate wave screen
- 11 Extend 'T' section with lower landings for improved access and install new wavescreens on both sides

REV	DATE	DESCRIPTION	DES	VER	APPD
E	08/08/23	CONCEPT DESIGN	JD		
D	02/02/23	CONCEPT DESIGN	AR	NB	NB
C	28/11/22	CONCEPT DESIGN	JD	NB	NB
B	07/10/22	CONCEPT DESIGN	JD	NB	NB
A	04/10/22	CONCEPT DESIGN	JD	NB	NB

CLIENT

better boating
VICTORIA

© RANGE CONSULTING ALL RIGHTS RESERVED. THIS DOCUMENT IS PRODUCED BY RANGE CONSULTING SOLELY FOR THE BENEFIT OF AND USE BY THE CLIENT IN ACCORDANCE WITH THE TERMS OF THE RETAINER. RANGE CONSULTING DOES NOT AND SHALL NOT ASSUME ANY RESPONSIBILITY OR LIABILITY WHATSOEVER TO ANY THIRD PARTY ARISING OUT OF ANY USE OR RELIANCE BY THIRD PARTY ON THE CONTENT OF THIS DOCUMENT

FSC | RANGE

ABN 97 644 088 344,
LEVEL 1, 355 Bridge Rd,
Richmond VIC Australia 3121.
Phone 1300 372 477
Email: projects@fsc-range.com
Web: www.fsc-range.com

DRAWN	JD	CLIENT	
CHECKED		PROJECT	St Leonards Boat Ramp
DESIGNED	JD	TITLE	Concept Design Plan Sheet 4
VERIFIED		DRAWING NUMBER	210228-FSC-CON-DRG-04
APPROVED		REV	E