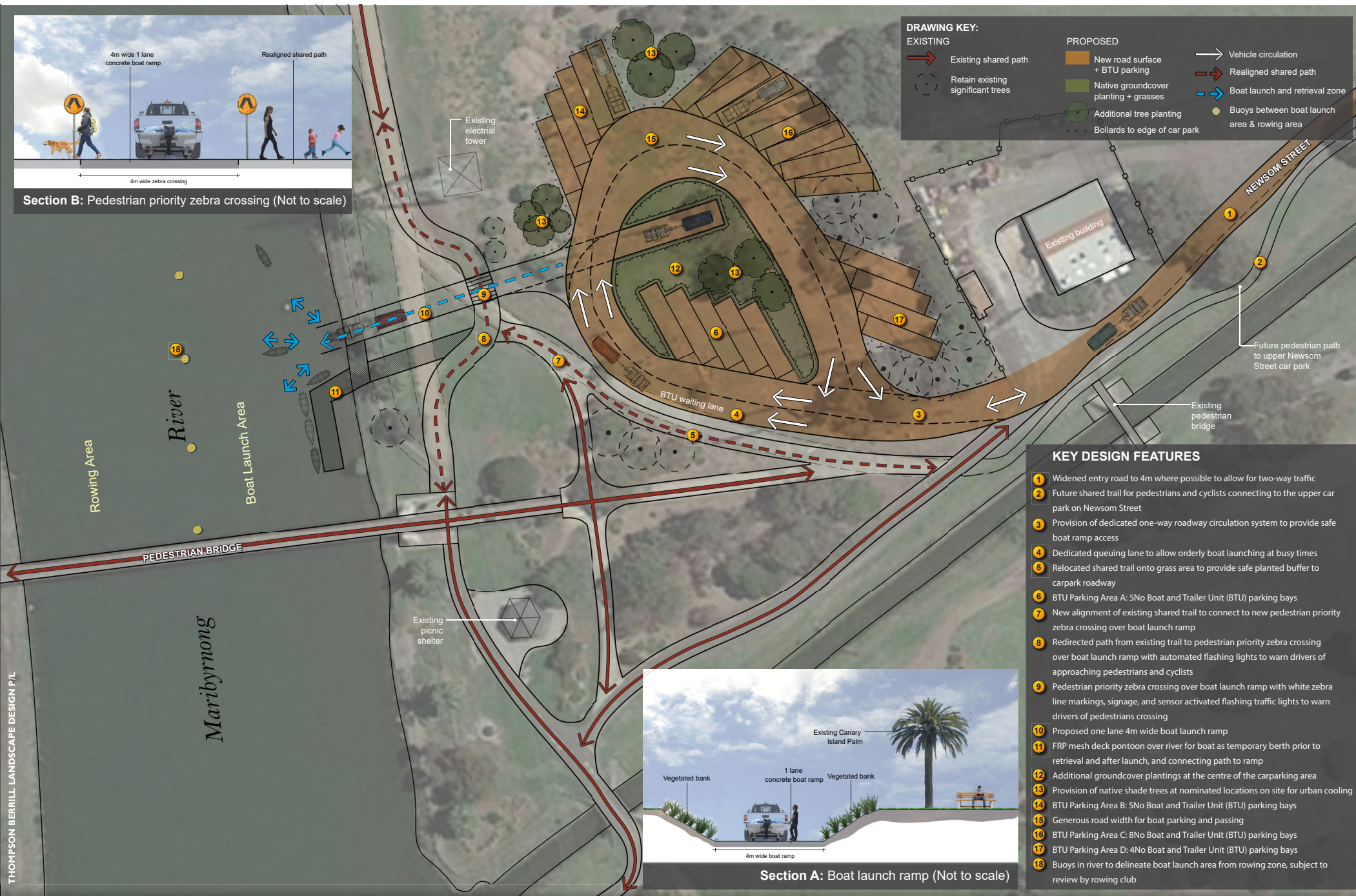


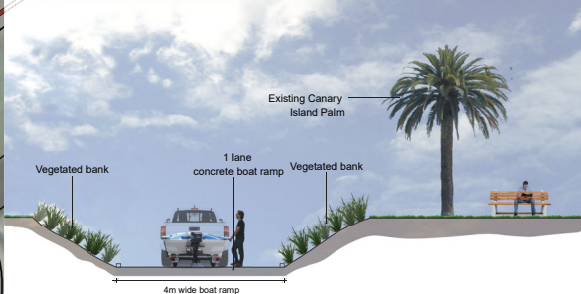
Section B: Pedestrian priority zebra crossing (Not to scale)

DRAWING KEY:

EXISTING	PROPOSED	
Existing shared path	New road surface + BTU parking	Vehicle circulation
Retain existing significant trees	Native groundcover planting + grasses	Realigned shared path
	Additional tree planting	Boat launch and retrieval zone
	Bollards to edge of car park	Buoys between boat launch area & rowing area



- KEY DESIGN FEATURES**
- 1 Widened entry road to 4m where possible to allow for two-way traffic
 - 2 Future shared trail for pedestrians and cyclists connecting to the upper car park on Newsom Street
 - 3 Provision of dedicated one-way roadway circulation system to provide safe boat ramp access
 - 4 Dedicated queuing lane to allow orderly boat launching at busy times
 - 5 Relocated shared trail onto grass area to provide safe planted buffer to carpark roadway
 - 6 BTU Parking Area A: 5No Boat and Trailer Unit (BTU) parking bays
 - 7 New alignment of existing shared trail to connect to new pedestrian priority zebra crossing over boat launch ramp
 - 8 Redirected path from existing trail to pedestrian priority zebra crossing over boat launch ramp with automated flashing lights to warn drivers of approaching pedestrians and cyclists
 - 9 Pedestrian priority zebra crossing over boat launch ramp with white zebra line markings, signage, and sensor activated flashing traffic lights to warn drivers of pedestrians crossing
 - 10 Proposed one lane 4m wide boat launch ramp
 - 11 FRP mesh deck pontoon over river for boat as temporary berth prior to retrieval and after launch, and connecting path to ramp
 - 12 Additional groundcover plantings at the centre of the carparking area
 - 13 Provision of native shade trees at nominated locations on site for urban cooling
 - 14 BTU Parking Area B: 5No Boat and Trailer Unit (BTU) parking bays
 - 15 Generous road width for boat parking and passing
 - 16 BTU Parking Area C: 8No Boat and Trailer Unit (BTU) parking bays
 - 17 BTU Parking Area D: 4No Boat and Trailer Unit (BTU) parking bays
 - 18 Buoys in river to delineate boat launch area from rowing zone, subject to review by rowing club



Section A: Boat launch ramp (Not to scale)

THOMPSON BERRILL LANDSCAPE DESIGN P/L